



Manufacturing Product Solutions

Products

- Drywall Patch
- Masking Tape
- Drywall Paper Tape
- Drywall Mesh Tape
- Aluminum Fiberglass Tape

Services

- Assembly
- Packaging
- Manufacturing

MEA Manufacturing LLC Pro Patch Systems



MEA Manufacturing LLC Pro Patch Systems

Telephone: 224-370-8591

Email: Meamanufacturing@gmail.com

Website: Meamanufacturingllc.com

Address: 4025 MainStreet McHenry,IL 60050

**WE PROVIDE
EFFICIENT, RELIABLE,
AND HIGH-QUALITY MANUFACTURING SERVICES**



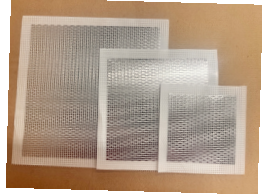
CONTENTS

- 01 About Us
- 03 Drywall Patch (Light)
- 04 Drywall Patch (Heavy)
- 05 Aluminum Foil Fiberglass Tape
- 06 Masking Tape
- 07 Drywall Joint Paper Tape
- 08 Drywall Mesh Tape



About Us

Pro Patch Systems has been manufacturing, assembling, and packaging drywall repair patches since 1986. Our founder, Dennis Hoffmann started the company after inventing and patenting the original 'peel and stick' metal drywall patch. After 37 years in the business, we are still the number one suppliers for both professional and consumer customers. Our goal is to make it easy for our customers to get all of their product needs fulfilled by one company. We believe in delivering the best quality at affordable prices.



Drywall Patch

Light

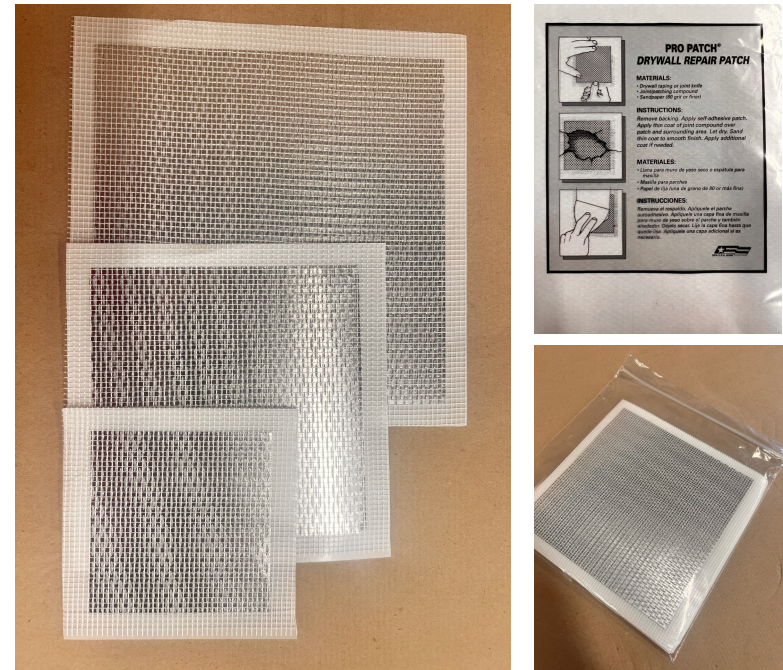


Sizes (inches)
4x4
6x6
8x8
12x12

- Self-adhesive
- Rust Proof Aluminum
- Easy to install

Drywall Patch

Heavy



Sizes (inches)
4x4
6x6
8x8

- Self-adhesive
- Rust Proof Aluminum
- Easy to install

Aluminum Foil Fiberglass Tape

Light

Aluminum Foil Fiberglass Tape is a thin tape that combines fiberglass cloth with a laminate of aluminum foil.

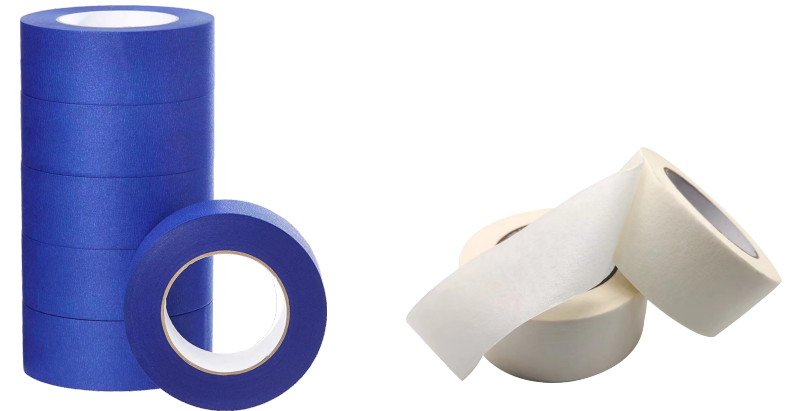
Aluminum Foil Fiberglass Tape provides high strength and reflectivity with excellent flexibility. Spray protective aluminum foil tape backing (7um foil / FR glue / 85gsm glass cloth) is coated with a high-performance, solvent-based acrylic adhesive and protected by an easy-release silicone release paper.

- Aluminum Foil Fiberglass Tape backing provides excellent reflection of both heat and light.
- High quality adhesive with super strong adhesion and holding power.
- Offers reliable and durable sealing of Aluminum Foil Fiberglass Tape facing joints and seams in industrial pipe thermal insulation application.



We offer custom sizes of every tape type

Masking Tape



Masking Tape mainly uses crepe paper as the backing material, which is coated with a rubber adhesive.

It is widely used in interior decoration, painting household items and luxury cars.

- Waterproof
- No glue residue
- High temperature resistance (150 °C)
- Tearable and Writeable

We offer custom sizes of every tape type

Drywall Joint Paper Tape

Drywall Joint Paper Tape is a high-quality tape designed for use with joint compound to reinforce Gypsum board joints and corners before painting, texturing, or wallpapering. This joint tape is exceptionally strong when both wet and dry, with tapered edges that offer invisible seams. Its superior performance makes it the preferred choice among professionals.

- Excellent alkali resistance and durability
- High tensile strength and crack resistance
- No deterioration or foam
- Excellent self-adhesion



We offer custom sizes of every tape type

Drywall Mesh Tape

Self-adhesive Drywall Mesh Tape (seam tape) is made of glass fiber mesh cloth as the base material and compounded with self-adhesive emulsion. This product has excellent self-adhesiveness, superior conformability, and strong space stability. Ideal material for preventing cracks in walls and ceilings and reinforcing plasterboard joints in the industry. The glass fiber tape is simple in construction and can be directly pasted on the wall without glue application. It can only be broken when the strength reaches 400N/50mm or more, and it has mesh holes. In addition, there is no need to pre-coat the primer during construction.

- Long service life
- Excellent self-adhesiveness
- Mildew resistant
- Good air permeability
- No foam



We offer custom sizes of every tape type